

# Building Backyard Pollinator Habitats



Meredith Gilbert

Wildlife Communications Specialist



# What are Pollinators?

- Animals that move from plant to plant while searching for **protein-rich pollen** or **high-energy nectar** to eat.
- **Fertilize plants** as they move, allowing the plant to form seeds, berries, fruits and other plant foods.
- **Over 100,000 invertebrates** (butterflies, wasps, moths, bees, flies, beetles) and **over 1,000 mammals, birds, reptiles, and amphibians act as pollinators.**





# What are Pollinators?





# Common Ohio Bee Species

Honey Bee



Bumble Bee



Squash Bee



Carpenter Bee

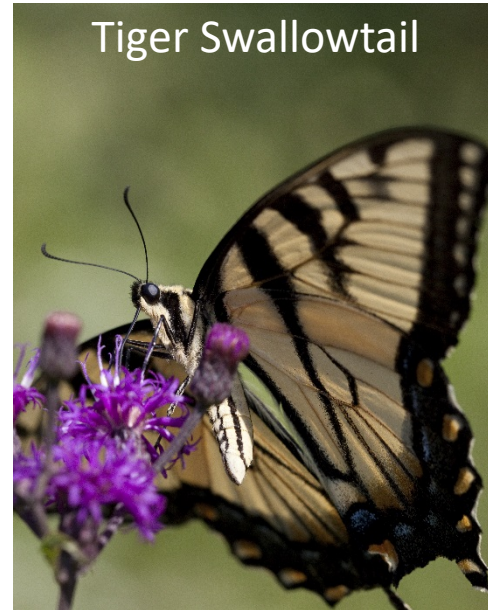
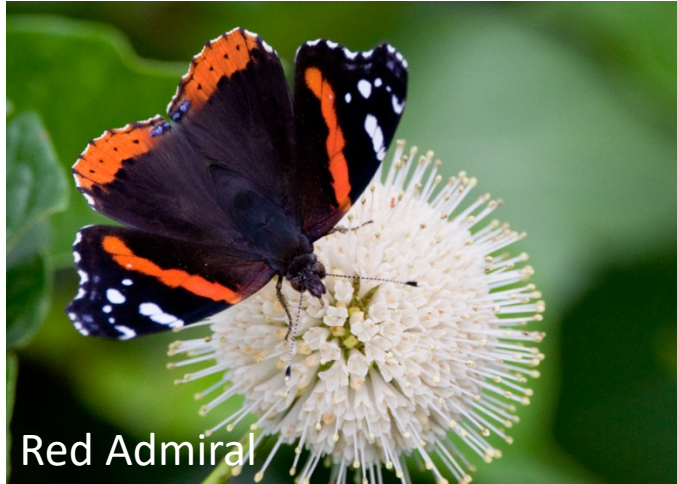


Mason Bee





# Common Ohio Butterfly Species





# Why We Love Pollinators

Over **75% of plants** rely on animal pollinators

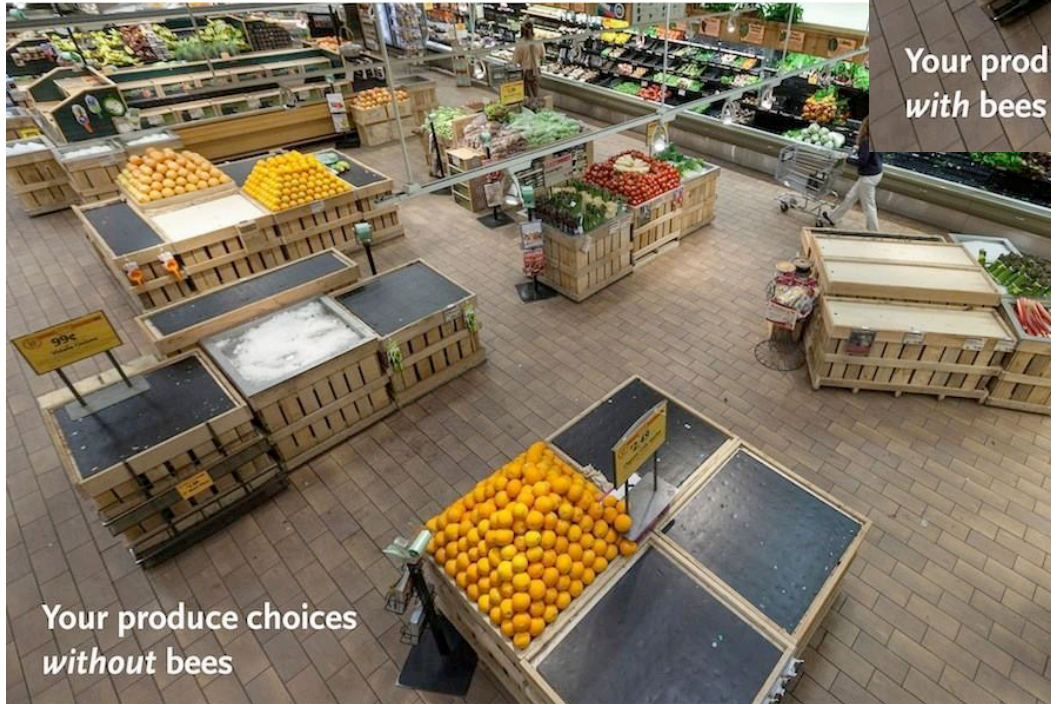




# Produce Choices With and Without Bees



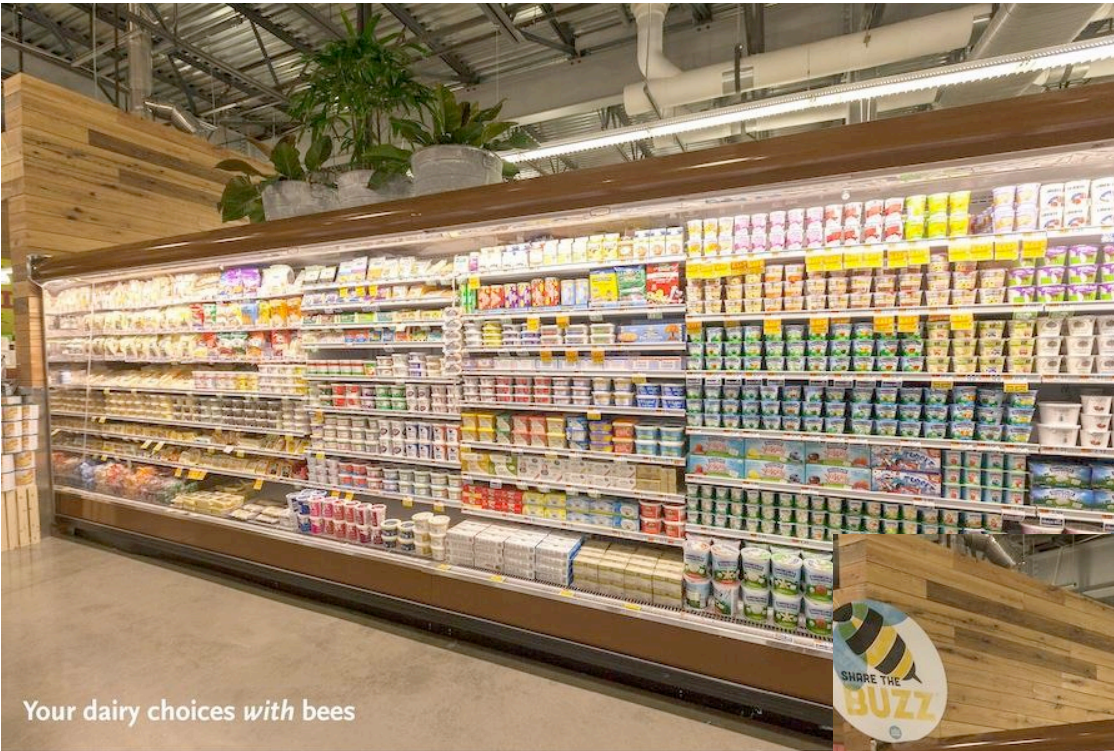
Your produce choices  
*with* bees



Your produce choices  
*without* bees

More than 150 food crops  
depend on pollinators,  
including almost all fruit and  
grain crops





Your dairy choices *with* bees

Pollinators are responsible for 1 out of 3 bites of food we take each day



Your dairy choices *without* bees

## Dairy Choices With and Without Bees

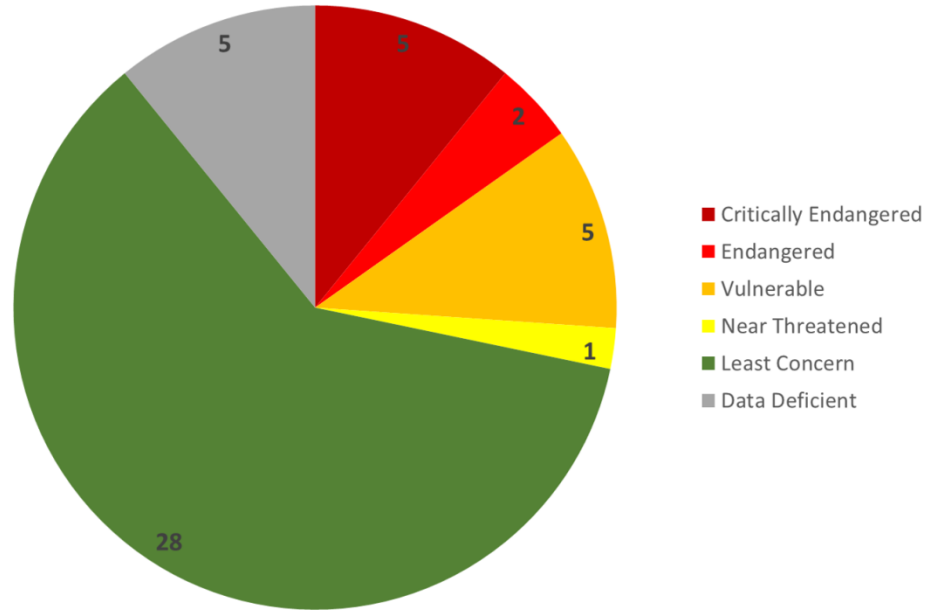


# The Issue

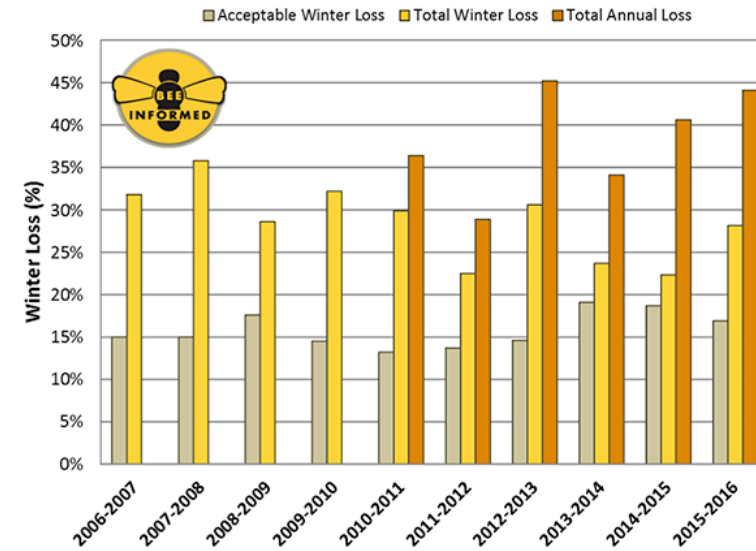
## General Decline in Pollinators



Bumble Bees of North America



Total US managed honey bee colonies Loss Estimates



Bumble bees commercially reared for agriculture are **transmitting diseases** to wild populations.



One of the biggest factors affecting all pollinators is **fragmentation and loss of habitat**.



**Widespread pesticide use** further degrades habitat by removing flowering plants and poisoning pollinators.



**Climate change** is affecting bumble bees by changing bloom time and subjecting populations to fluctuating temperatures and weather extremes.



# The Issue

## Monarch Decline



J. Burris

# Butterfly Life Cycle





# Monarch Butterfly Laying Eggs



# Monarch Butterfly Egg Hatching





# Monarch Caterpillar Instars



egg through 5th instar larvae

# Monarch Caterpillar Transforming into Chrysalis

